







5

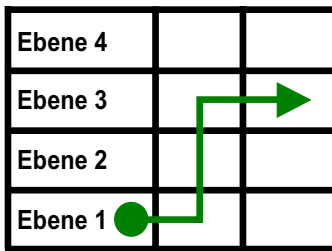
Meldergruppe 5	Gebäude Musterkunde	Etage Ebene 3	Raum Flur, Büro	Melderanzahl 12	Melderart RM	Besondere Hinweise
--------------------------	-------------------------------	-------------------------	---------------------------	---------------------------	------------------------	--------------------

Legende:

-  Standort
-  Einsatzweg
-  Hauptzugang
- BMZ** Brandmeldezentrale
- FBF** FW-Bedienfeld
- FAT** FW-Anzeigetableau
- i** FW-Informationspunkt
- FSD** FW-Schlüsseldepot
- FSE** FW-Freischaltelement
-  Meldebereich
-  Automatischer Brandmelder

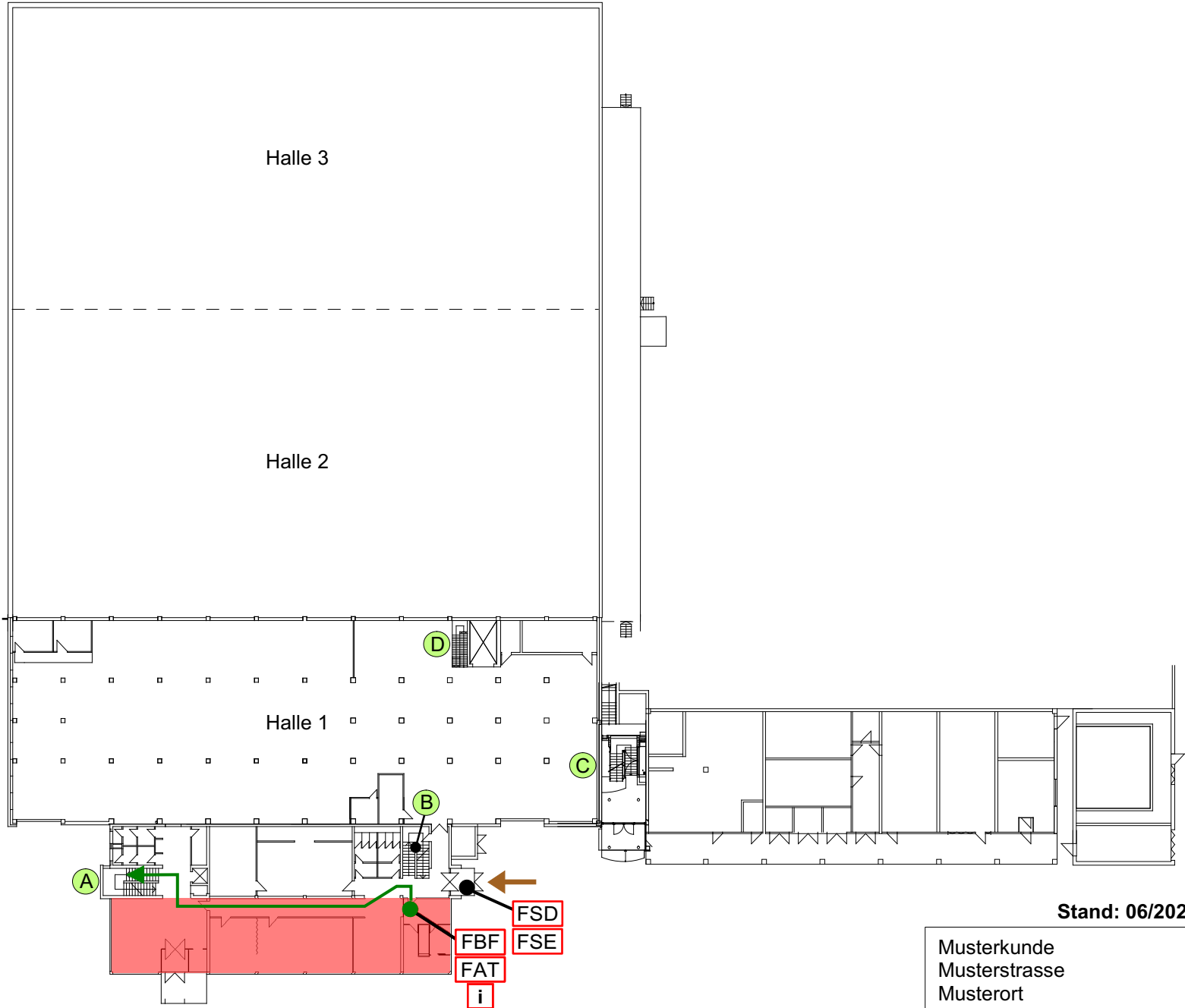
-  Treppenhausbezeichnung

Treppe
A



Ebene
2+3

Ebene
1+2+3



Stand: 06/2020

Musterkunde
Musterstrasse
Musterort